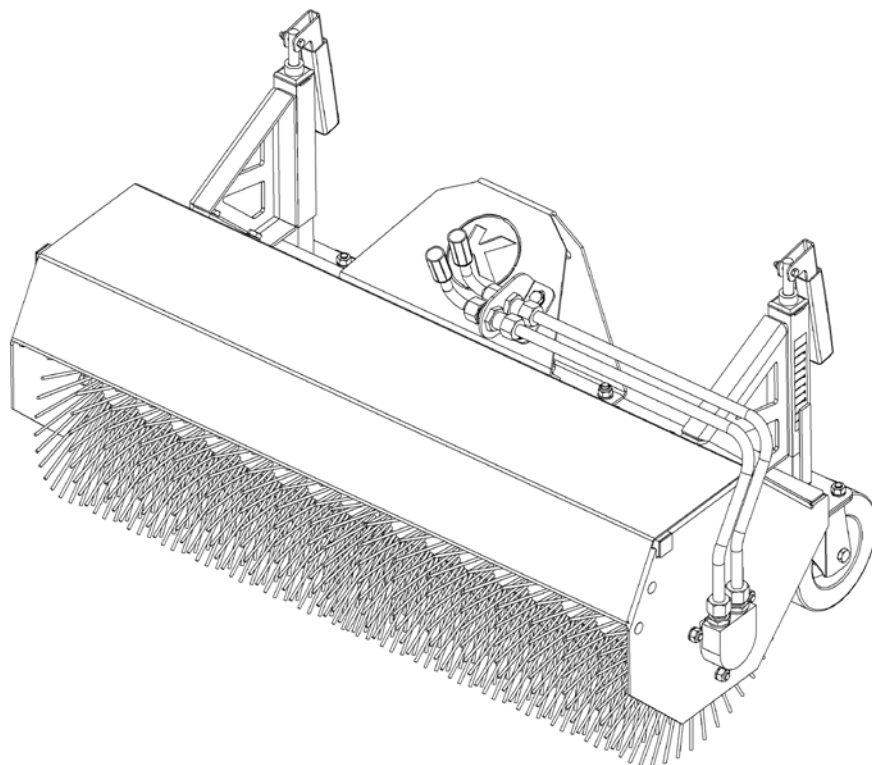




Spare parts lists

Front sweeper

EFKM 07532 H-K 35; EFKM 07532 H-KU 70
EFKM 08232 H-K 35; EFKM 08232 H-KU 70
EFKM 09032 H-K 35; EFKM 09032 H-KU 70
KM 09032 H-FKDR



Order number: E00040 From.machine-No: Rev.: R03 Data 03.11.2014



Manufactured by Kersten
Arealmaschinen GmbH
Empeler Straße 95
D - 46459 Rees
www.kersten-maschinen.de

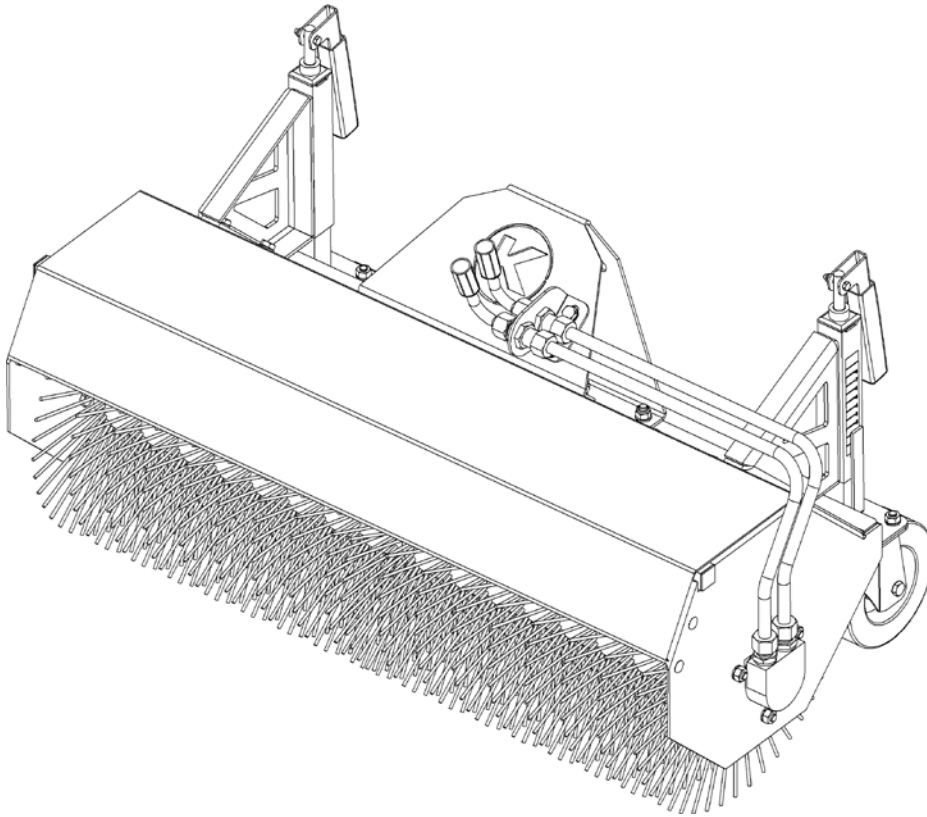


Distributed in UK by
Kersten (UK) Ltd Tel. 0118 986 9253
Progress House
39 Boulton Road Reading, RG2 0NH
www.kerstenuk.com - info@kerstenuk.com

Table of Contents

| | | |
|----------|---|-----------|
| 1 | Model Overview | 3 |
| 1.1 | EFKM 07532 H-K 35 - C01773 R01 | 3 |
| 1.2 | EFKM 08232 H-K 35 - C01774 R01 | 3 |
| 1.3 | EFKM 09032 H-K 35 - C01775 R01 | 3 |
| 1.4 | EFKM 07532 H-KU 70 - C01776 R01 | 4 |
| 1.5 | EFKM 08232 H-KU 70 - C01777 R01 | 4 |
| 1.6 | EFKM 09032 H-KU 70 - C01778 R01 | 4 |
| 1.7 | KM 09032 H-FKDR - C02634 R01 | 4 |
| 2 | Module Overview..... | 5 |
| 2.1 | BASIC UNIT, ASSEMBLY | 5 |
| 2.1.1 | BASIC UNIT - 07532 H-K 35 / H-KU 70 - C01782 R02 | 6 |
| 2.1.2 | BASIC UNIT - 08232 H-K 35 / H-KU 70 - C01783 R02..... | 7 |
| 2.1.3 | BASIC UNIT - 09032 H-K 35 / H-KU 70 - C01781 R02..... | 8 |
| 2.2 | BASIC HOUSING..... | 9 |
| 2.2.1 | BASIC HOUSING - 07532 H-K 35 / H-KU 70 - C03546 R01 | 10 |
| 2.2.2 | BASIC HOUSING - 08232 H-K 35 / H-KU 70 - C03521 R01 | 10 |
| 2.2.3 | BASIC HOUSING - 09032 H-K 35 / H-KU 70 - C03547 1 | 10 |
| 2.3 | GROWING RECORD K 35 - C02044 R01 | 11 |
| 2.4 | GROWING RECORD KU 70 – C02045 R02..... | 12 |
| 2.5 | GROWING RECORD KD – C02046 R02..... | 13 |
| 3 | Accessories for front sweeper | 14 |
| 3.1 | DIRT COLLECTION SSB 075 K; SSB 082 K; SSB 090 K..... | 15 |
| 3.1.1 | DIRT COLLECTION - SSB 075 K – C01791 R00 | 16 |
| 3.1.2 | DIRT COLLECTION - SSB 082 K - C01790 R00 | 17 |
| 3.1.3 | DIRT COLLECTION - SSB 090 K - C01789 R00..... | 18 |
| 3.2 | RUBBER INJECTION RAGS - GUSPL 075; GUSPL 082; GUSPL 090..... | 19 |
| 3.2.1 | RUBBER INJECTION RAGS - GUSPL 075 – C01792 R00 | 19 |
| 3.2.2 | RUBBER INJECTION RAGS - GUSPL 082 – C01793 R00 | 20 |
| 3.2.3 | RUBBER INJECTION RAGS - GUSPL 090 – C01794 R00 | 20 |
| 3.3 | MOUNTING SIDE BROOM - ASM 4032 / ASM 4037 - C00900 R00 | 21 |
| 3.4 | JACK STAND AST 32 LR - C01796 R00..... | 23 |
| 3.5 | WATER RETAINING DEVICE 5 LTR. WAS 51 K 1500 - C01818 R00..... | 24 |
| 3.6 | WATER RETAINING DEVICE 5 LTR. - WAS 52 KM - C01795 R00..... | 25 |
| 3.7 | SWEEPING ROLLERS: DIAMETER 32CM..... | 26 |

1 Model Overview



1.1 EFKM 07532 H-K 35 - C01773 R01

| No. | Art.-No. | Num. | Designation |
|-----|------------|------|-----------------------------------|
| 1 | C01782 R02 | 1 | Basic unit 07532 H-K 35 / H-KU 70 |
| 2 | C02044 R01 | 1 | Cultivation recording K 35 |

1.2 EFKM 08232 H-K 35 - C01774 R01

| No. | Art.-No. | Num. | Designation |
|-----|------------|------|-----------------------------------|
| 1 | C01783 R02 | 1 | Basic unit 08232 H-K 35 / H-KU 70 |
| 2 | C02044 R01 | 1 | Cultivation recording K 35 |

1.3 EFKM 09032 H-K 35 - C01775 R01

| No. | Art.-No. | Num. | Designation |
|-----|------------|------|-----------------------------------|
| 1 | C01781 R02 | 1 | Basic unit 09032 H-K 35 / H-KU 70 |
| 2 | C02044 R01 | 1 | Cultivation recording K 35 |

1.4 EFKM 07532 H-KU 70 - C01776 R01

| No. | Art.-No. | Num. | Designation |
|-----|------------|------|-----------------------------------|
| 1 | C01782 R02 | 1 | Basic unit 07532 H-K 35 / H-KU 70 |
| 2 | C02045 R02 | 1 | Cultivation recording KU 70 |

1.5 EFKM 08232 H-KU 70 - C01777 R01

| No. | Art.-No. | Num. | Designation |
|-----|------------|------|-----------------------------------|
| 1 | C01783 R02 | 1 | Basic unit 08232 H-K 35 / H-KU 70 |
| 2 | C02045 R02 | 1 | Cultivation recording KU 70 |

1.6 EFKM 09032 H-KU 70 - C01778 R01

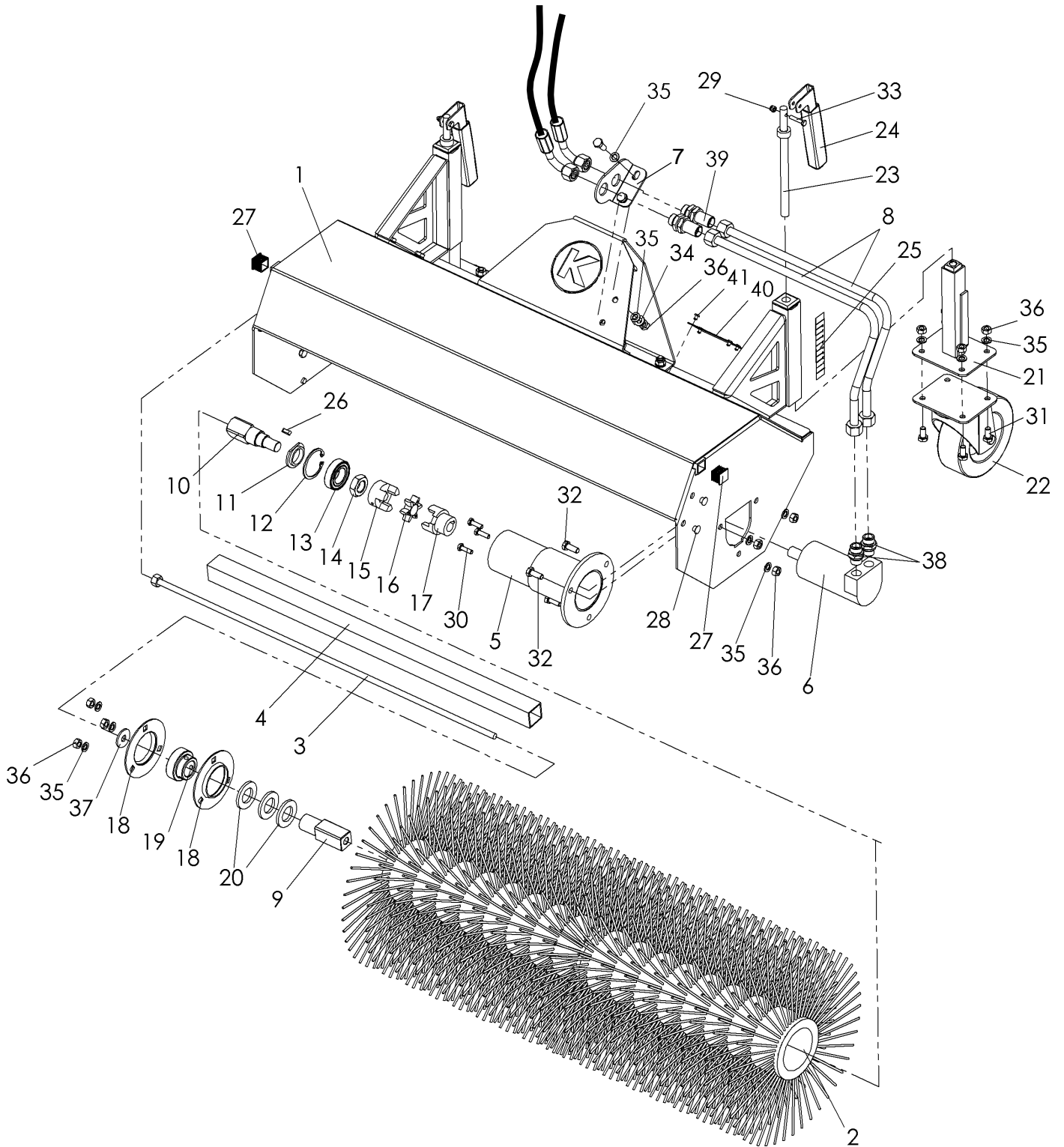
| No. | Art.-No. | Num. | Designation |
|-----|------------|------|-----------------------------------|
| 1 | C01781 R02 | 1 | Basic unit 09032 H-K 35 / H-KU 70 |
| 2 | C02045 R02 | 1 | Cultivation recording KU 70 |

1.7 KM 09032 H-FKDR - C02634 R01

| No. | Art.-No. | Num. | Designation |
|-----|------------|------|--------------------------|
| 1 | C01781 R02 | 1 | Basic unit |
| 2 | C02046 R02 | 1 | Cultivation recording KD |

2 Overview of Modules

2.1 Basic device, assembly



2.1.1 Basic unit - 07532 H-K 35 / H-KU 70 - C01782 R02

| No. | Art.-No. | Num. | Designation |
|-----|------------------------|------------|--------------------------------------|
| 1 | C03546 | 1 | Headers |
| 2 | Please refer Kp.3.7 | 1 Sentence | Broom |
| 3 | 712 075 105 | 1 | Tension rod with nut |
| 4 | 712 075 106 | 1 | Drive tube |
| 5 | 110 000 040 | 1 | Drive carrier |
| 6 | 935 111 040 | 1 | Hydraulic motor with side connection |
| 7 | C03697 | 1 | Holder for hydraulic line |
| 8 | C02049 | 2 | Hydraulic line |
| 9 | 100 000 430 | 1 | Drive stub right |
| 10 | 110 000 425 | 1 | Drive stub left |
| 11 | 110 000 010 | 1 | Disc engine mount |
| 12 | 906 000 470 | 1 | Circlip inside |
| 13 | 924 106 005 | 1 | Ball-bearing |
| 14 | 900 020 001 | 1 | Skt. Mother flat |
| 15 | 925 203 016 | 1 | Clutch front side |
| 16 | 925 202 098 | 1 | Coupling driver |
| 17 | 925 201 016 | 1 | Clutch motor side |
| 18 | 924 200 205 | 1 Sentence | Bearings |
| 19 | 924 100 205 | 1 | Ball-bearing |
| 20 | 905 125 000 | 3 | Washer |
| 21 | 100 000 485 | 2 | Caster support |
| 22 | 926 302 140 | 2 | Caster |
| 23 | 100 000 490 | 2 | Spindle |
| 24 | 700 000 085 | 2 | Hand lever |
| 25 | 700 000 151 | 2 | Sticker height scale |
| 26 | 908 005 515 | 1 | Adjusting spring |
| 27 | 943 120 202 | 2 | Protective cap |
| 28 | 943 700 008 | 8 | Blind plug |
| 29 | 900 005 002 | 2 | Stop mother |
| 30 | 901 006 020 | 3 | Skt.-screw without shank |
| 31 | 901 008 016 | 8 | Skt.-screw without shank |
| 32 | 901 008 020 | 5 | Skt.-screw without shank |
| 33 | 901 005 025 | 2 | Skt.-screw without shank |
| 34 | 905 108 000 | 2 | Washer |
| 35 | 905 008 000 | 18 | Spring washer |
| 36 | 900 008 001 | 16 | Hexagon nut |
| 37 | 905 210 000 | 1 | K-disc |
| 38 | 931 071 238 | 2 | Hydraulic connection |
| 39 | 931 181 200 | 2 | Bulkhead |
| 40 | On demand | 1 | Nameplate |
| 41 | 908 040 100 | 4 | Blind rivets |

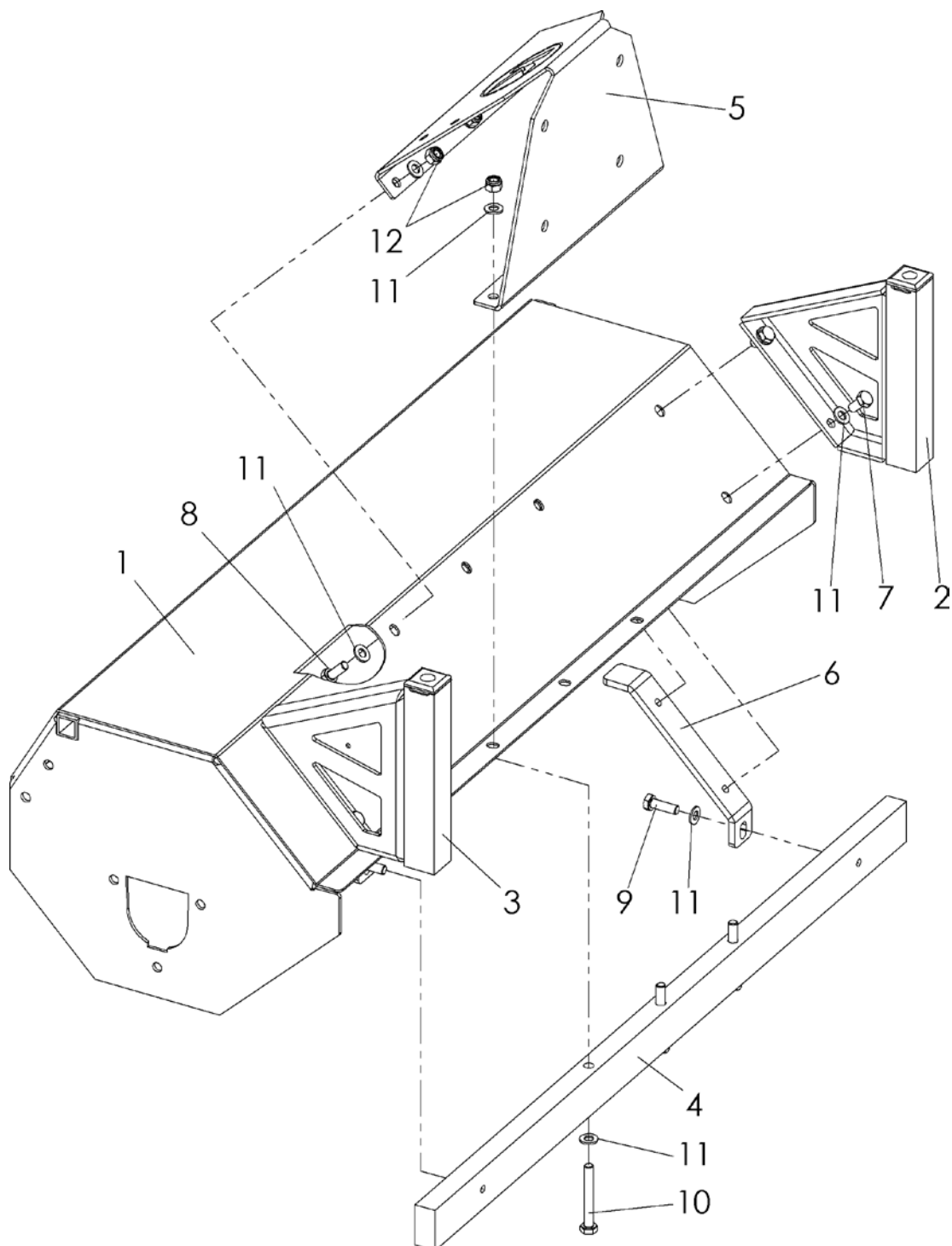
2.1.2 Basic unit - 08232 H-K 35 / H-KU 70 - C01783 R02

| No. | Art.-No. | Num. | Designation |
|-----|------------------------|------------|--------------------------------------|
| 1 | C03521 | 1 | Headers |
| 2 | Please refer Kp.3.7 | 1 Sentence | Broom |
| 3 | 712 082 105 | 1 | Tension rod with nut |
| 4 | 712 082 106 | 1 | Drive tube |
| 5 | 110 000 040 | 1 | Drive carrier |
| 6 | 935 111 040 | 1 | Hydraulic motor with side connection |
| 7 | C03697 | 1 | Holder for hydraulic line |
| 8 | C02049 | 2 | Hydraulic line |
| 9 | 100 000 430 | 1 | Drive stub right |
| 10 | 110 000 425 | 1 | Drive stub left |
| 11 | 110 000 010 | 1 | Disc engine mount |
| 12 | 906 000 470 | 1 | Circlip inside |
| 13 | 924 106 005 | 1 | Ball-bearing |
| 14 | 900 020 001 | 1 | Skt. Mother flat |
| 15 | 925 203 016 | 1 | Clutch front side |
| 16 | 925 202 098 | 1 | Coupling driver |
| 17 | 925 201 016 | 1 | Clutch motor side |
| 18 | 924 200 205 | 1Satz | Bearings |
| 19 | 924 100 205 | 1 | ball-bearing |
| 20 | 905 125 000 | 3 | Washer |
| 21 | 100 000 485 | 2 | Caster support |
| 22 | 926 302 140 | 2 | Caster |
| 23 | 100 000 490 | 2 | Spindle |
| 24 | 700 000 085 | 2 | Hand lever |
| 25 | 700 000 151 | 2 | Sticker height scale |
| 26 | 908 005 515 | 1 | Adjusting spring |
| 27 | 943 120 202 | 2 | Protective cap |
| 28 | 943 700 008 | 8 | Blind plug |
| 29 | 900 005 002 | 2 | Stop mother |
| 30 | 901 006 020 | 3 | Skt.-screw without shank |
| 31 | 901 008 016 | 8 | Skt.-screw without shank |
| 32 | 901 008 020 | 5 | Skt.-screw without shank |
| 33 | 901 005 025 | 2 | Skt.-screw without shank |
| 34 | 905 108 000 | 2 | Washer |
| 35 | 905 008 000 | 18 | Spring washer |
| 36 | 900 008 001 | 16 | Hexagon nut |
| 37 | 905 210 000 | 1 | K-disc |
| 38 | 931 071 238 | 2 | Hydraulic connection |
| 39 | 931 181 200 | 2 | Bulkhead |
| 40 | On demand | 1 | Nameplate |
| 41 | 908 040 100 | 4 | Blind rivets |

2.1.3 Basic unit - 09032 H-K 35 / H-KU 70 - C01781 R02

| No. | Art.-No. | Num. | Designation |
|-----|------------------------|---------------|--------------------------------------|
| 1 | C03521 | 1 | Headers |
| 2 | Please refer Kp.3.7 | 1 Sentence | Broom |
| 3 | 712 090 105 | 1 | Tension rod with nut |
| 4 | 712 090 106 | 1 | Drive tube |
| 5 | 110 000 040 | 1 | Drive carrier |
| 6 | 935 111 040 | 1 | Hydraulic motor with side connection |
| 7 | C03698 | 1 | Holder for hydraulic line |
| 8 | C02049 | 2 | Hydraulic line |
| 9 | 100 000 430 | 1 | Drive stub right |
| 10 | 110 000 425 | 1 | Drive stub left |
| 11 | 110 000 010 | 1 | Disc engine mount |
| 12 | 906 000 470 | 1 | Circlip inside |
| 13 | 924 106 005 | 1 | Ball-bearing |
| 14 | 900 020 001 | 1 | Skt. Mother flat |
| 15 | 925 203 016 | 1 | Clutch front side |
| 16 | 925 202 098 | 1 | Coupling driver |
| 17 | 925 201 016 | 1 | Clutch motor side |
| 18 | 924 200 205 | 1Satz | Bearings |
| 19 | 924 100 205 | 1 | Ball-bearing |
| 20 | 905 125 000 | 3 | Washer |
| 21 | 100 000 485 | 2 | Caster support |
| 22 | 926 302 140 | 2 | Caster |
| 23 | 100 000 490 | 2 | Spindle |
| 24 | 700 000 085 | 2 | Hand lever |
| 25 | 700 000 151 | 2 | Sticker height scale |
| 26 | 908 005 515 | 1 | Adjusting spring |
| 27 | 943 120 202 | 2 | Protective cap |
| 28 | 943 700 008 | 8 | Blind plug |
| 29 | 900 005 002 | 2 | Stop mother |
| 30 | 901 006 020 | 3 | Skt.-screw without shank |
| 31 | 901 008 016 | 8 | Skt.-screw without shank |
| 32 | 901 008 020 | 5 | Skt.-screw without shank |
| 33 | 901 005 025 | 2 | Skt.-screw without shank |
| 34 | 905 108 000 | 2 | Washer |
| 35 | 905 008 000 | 18 | Spring washer |
| 36 | 900 008 001 | 16 | Hexagon nut |
| 37 | 905 210 000 | 1 | K-disc |
| 38 | 931 071 238 | 2 | Hydraulic connection |
| 39 | 931 181 200 | 2 | Bulkhead |
| 40 | On demand | 1 | Nameplate |
| 41 | 908 040 100 | 4 | Blind rivets |

2.2 Basic housing



2.2.1 Basic housing - 07532 H-K 35 / H-KU 70 - C03546 R01

| No. | Art.-No. | Num. | Designation |
|-----|-------------|------|------------------------------------|
| 1 | C03551 | 1 | Basic housing, compl. |
| 2 | C03505 | 1 | Wheel holder right hand screw able |
| 3 | C03506 | 1 | Wheel holder left, screw able |
| 4 | C03967 | 1 | Support strut, screw able |
| 5 | C03696 | 1 | Gusset, screw able |
| 6 | C03510 | 2 | Counter holder, wheel holder |
| 7 | 901 008 016 | 4 | Skt.-screw without shank |
| 8 | 901 008 020 | 3 | Skt.-screw without shank |
| 9 | 901 008 025 | 2 | Skt.-screw without shank |
| 10 | 901 108 060 | 3 | Skt. Screw with shank |
| 11 | 905 108 000 | 18 | Washer |
| 12 | 900 008 002 | 6 | Stop mother |

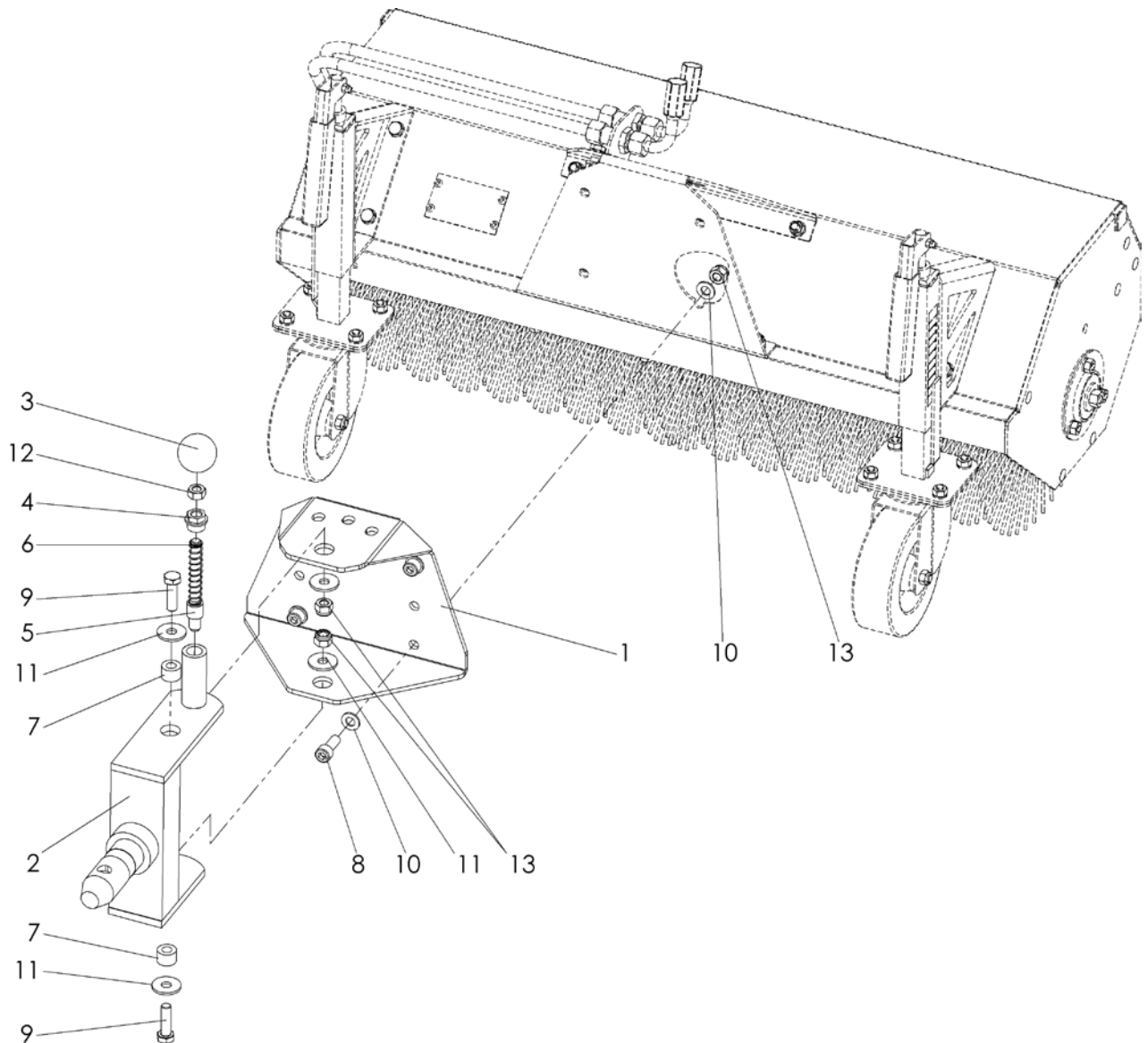
2.2.2 Headers - 08232 H-K 35 / H-KU 70 - C03521 R01

| No. | Art.-No. | Num. | Designation |
|-----|-------------|------|------------------------------------|
| 1 | C03511 | 1 | Basic housing, compl. |
| 2 | C03505 | 1 | Wheel holder right hand screw able |
| 3 | C03506 | 1 | Wheel holder left, screw able |
| 4 | C03509 | 1 | Support strut, screw able |
| 5 | C03696 | 1 | Gusset, screw able |
| 6 | C03510 | 2 | Counter holder, wheel holder |
| 7 | 901 008 016 | 4 | Skt.-screw without shank |
| 8 | 901 008 020 | 3 | Skt.-screw without shank |
| 9 | 901 008 025 | 2 | Skt.-screw without shank |
| 10 | 901 108 060 | 3 | Skt. Screw with shank |
| 11 | 905 108 000 | 18 | Washer |
| 12 | 900 008 002 | 6 | Stop mother |

2.2.3 Headers - 09032 H-K 35 / H-KU 70 - C03547 R01

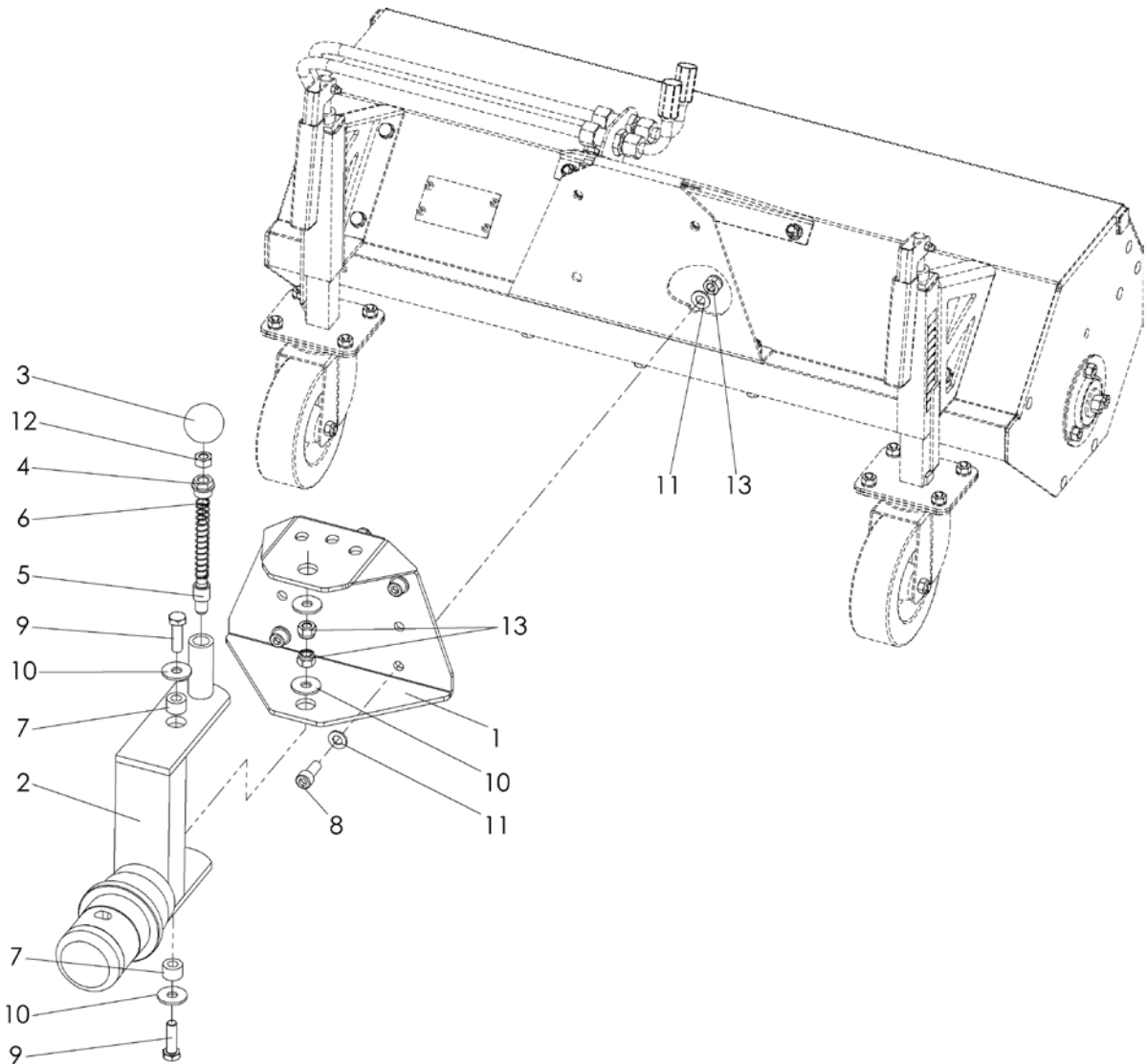
| No. | Art.-No. | Num. | Designation |
|-----|-------------|------|------------------------------------|
| 1 | C03552 | 1 | Basic housing, compl. |
| 2 | C03505 | 1 | Wheel holder right hand screw able |
| 3 | C03506 | 1 | Wheel holder left, screw able |
| 4 | C03965 | 1 | Support strut, screw able |
| 5 | C03696 | 1 | Gusset, screw able |
| 6 | C03510 | 2 | Counter holder, wheel holder |
| 7 | 901 008 016 | 4 | Skt.-screw without shank |
| 8 | 901 008 020 | 3 | Skt.-screw without shank |
| 9 | 901 008 025 | 2 | Skt.-screw without shank |
| 10 | 901 108 060 | 3 | Skt. Screw with shank |
| 11 | 905 108 000 | 18 | Washer |
| 12 | 900 008 002 | 6 | Stop mother |

2.3 Attachment Recording K 35 - C02044 R01



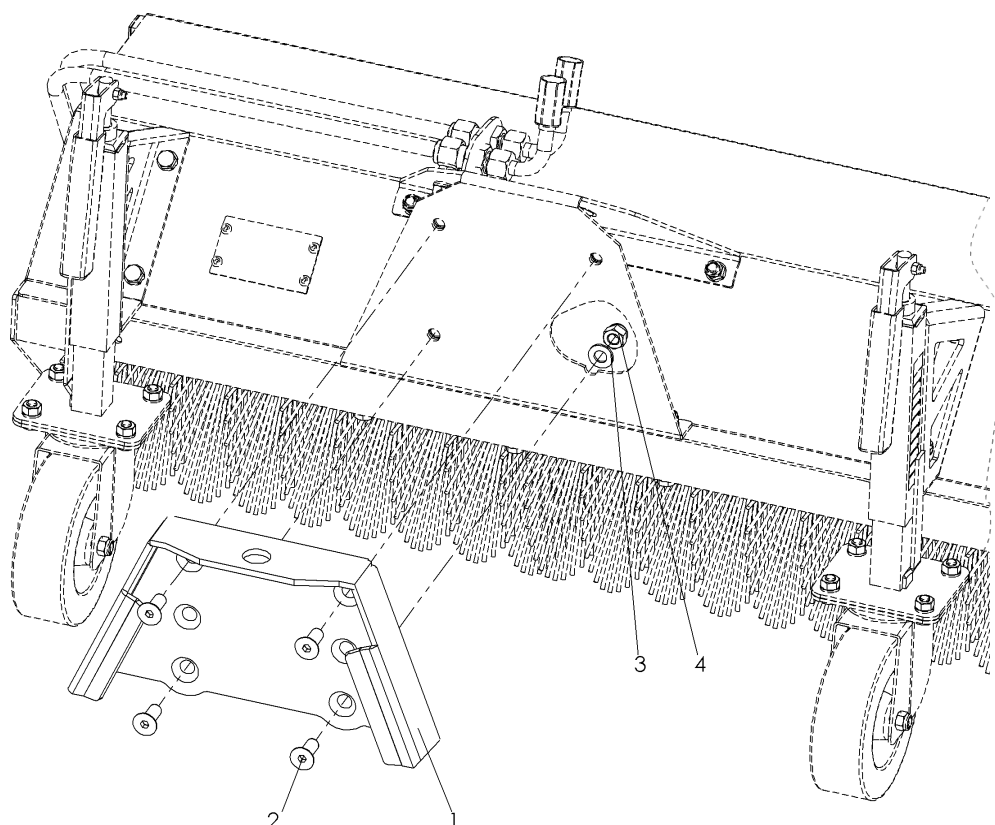
| No. | Art.-No. | Num. | Designation |
|-----|-------------|------|-------------------------------------|
| 1 | 700 002 267 | 1 | Admission |
| 2 | C01067 | 1 | Intermediate frame |
| 3 | 941 220 010 | 1 | Kugelk pot |
| 4 | 700 000 171 | 1 | Screw |
| 5 | 700 001 170 | 1 | Locking pin |
| 6 | 909 100 189 | 1 | Compression spring |
| 7 | 705 205 135 | 2 | Shell |
| 8 | 901 810 025 | 4 | Cylinder head screw with inner. Skt |
| 9 | 901 010 035 | 2 | Skt.-screw without shank |
| 10 | 905 110 000 | 8 | Washer |
| 11 | 905 210 000 | 4 | K-disc |
| 12 | 900 010 001 | 1 | Hexagon nut |
| 13 | 900 010 002 | 6 | Stop mother |

2.4 Attachment Recording KU 70 – C02045 R02



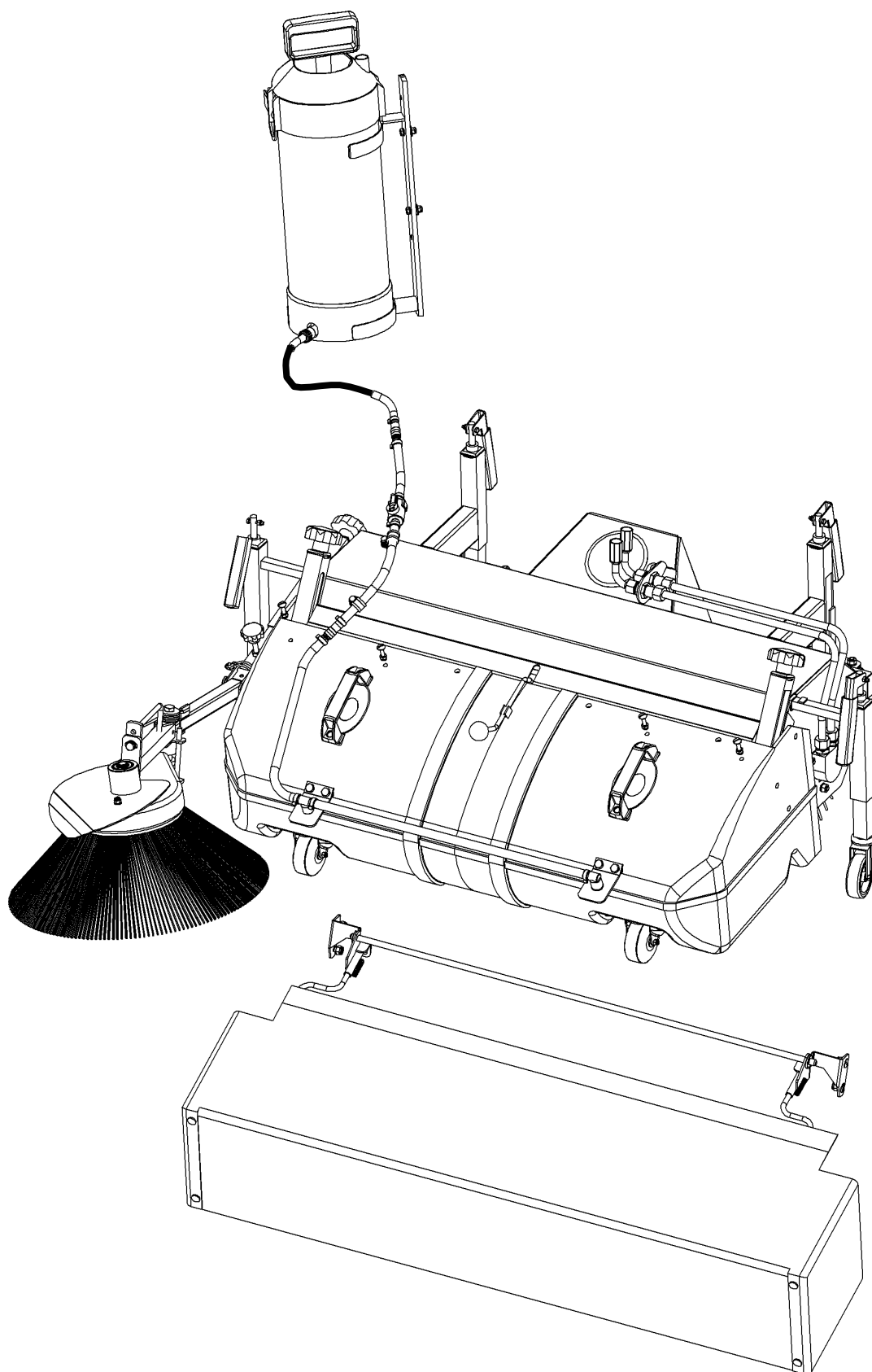
| No. | Art.-No. | Num. | Designation |
|-----|-------------|------|-------------------------------------|
| 1 | 700 002 267 | 1 | Admission |
| 2 | 700 002 266 | 1 | Between shooting |
| 3 | 941 220 010 | 1 | Kugelk pot |
| 4 | 700 000 171 | 1 | Screw |
| 5 | 700 001 170 | 1 | Locking pin |
| 6 | 909 100 189 | 1 | Compression spring |
| 7 | 705 205 135 | 2 | Shell |
| 8 | 901 810 025 | 4 | Cylinder head screw with inner. Skt |
| 9 | 901 010 035 | 2 | Skt.-screw without shank |
| 10 | 905 210 000 | 4 | K-disc |
| 11 | 905 110 000 | 8 | Washer |
| 12 | 900 010 001 | 1 | Hexagon nut |
| 13 | 900 010 002 | 6 | Stop mother |

2.5 Anbauaufnahme KD – C02046 R02

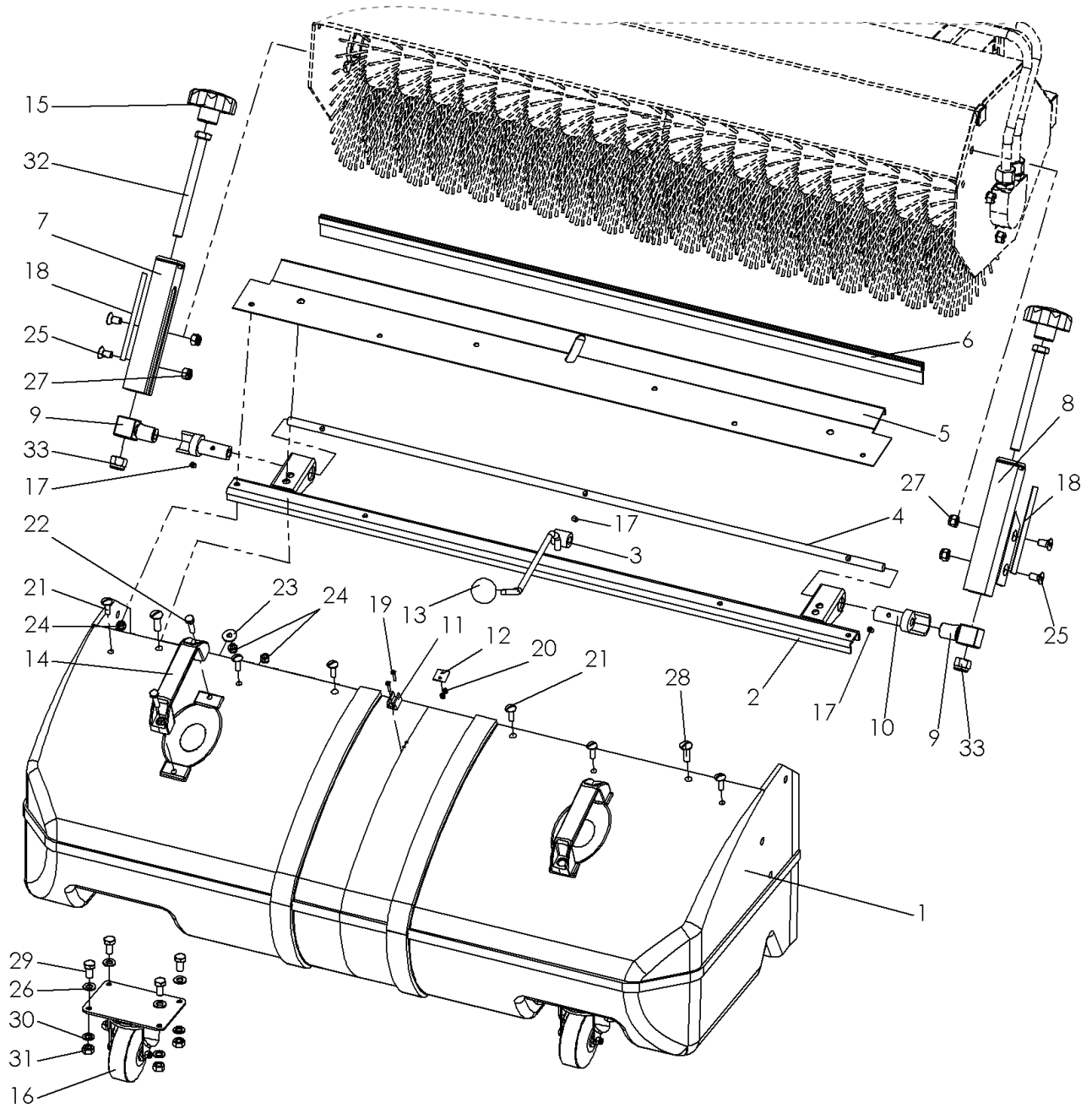


| No. | Art.-No. | Num. | Designation |
|-----|-------------|------|-----------------------------------|
| 1 | 050 427 010 | 1 | Dome triangle machine side |
| 2 | 901 210 025 | 4 | Countersunk screw with inner Skt. |
| 3 | 905 110 000 | 4 | Washer |
| 4 | 900 010 002 | 4 | Stop mother |

3 Accessories for front sweeper



3.1 Dirt collection SSB 075 K; SSB 082 K; SSB 090 K



3.1.1 Dirt collection - SSB 075 K – C01791 R00

| No. | Art.-No. | Num. | Designation |
|-----|-------------|------|--------------------------------------|
| 1 | 075 101 625 | 1 | Dirt collection |
| 2 | 712 075 115 | 1 | Sealing rail |
| 3 | 712 000 118 | 1 | Container closure lever |
| 4 | 712 075 116 | 1 | Locking bar |
| 5 | 075 101 626 | 1 | Retaining rail |
| 6 | 712 075 111 | 1 | Rubber strip |
| 7 | 712 000 122 | 1 | Guide rail right |
| 8 | 712 000 121 | 1 | Guide rail left |
| 9 | 712 000 120 | 2 | Closure Klotz |
| 10 | 712 000 117 | 2 | Container closure pipe |
| 11 | 912 900 101 | 1 | Lever holder |
| 12 | 712 075 093 | 1 | Lever holder counterpart |
| 13 | 941 220 008 | 1 | Kugelk pot |
| 14 | 941 310 005 | 2 | Handle |
| 15 | 941 410 031 | 2 | Stern griff |
| 16 | 926 301 076 | 2 | Wheel |
| 17 | 902 306 005 | 3 | Grub screw |
| 18 | 700 000 151 | 2 | Sticker height scale |
| 19 | 903 603 016 | 2 | Flat head screw with slot |
| 20 | 900 003 002 | 2 | Stop mother |
| 21 | 903 606 020 | 6 | Flat head screw with slot |
| 22 | 901 006 025 | 4 | Skt.-screw without shank |
| 23 | 905 206 018 | 4 | K-disc |
| 24 | 900 006 002 | 10 | Stop mother |
| 25 | 901 208 016 | 4 | Countersunk screw with inner socket. |
| 26 | 905 108 000 | 8 | Washer |
| 27 | 900 008 002 | 6 | Stop mother |
| 28 | 903 608 020 | 2 | Flat head screw with slot |
| 29 | 901 008 016 | 8 | Skt.-screw without shank |
| 30 | 905 008 000 | 8 | spring washer |
| 31 | 900 008 001 | 8 | Hexagon nut |
| 32 | 901 112 130 | 2 | Skt. Screw with shank |
| 33 | 900 012 002 | 2 | Stop mother |

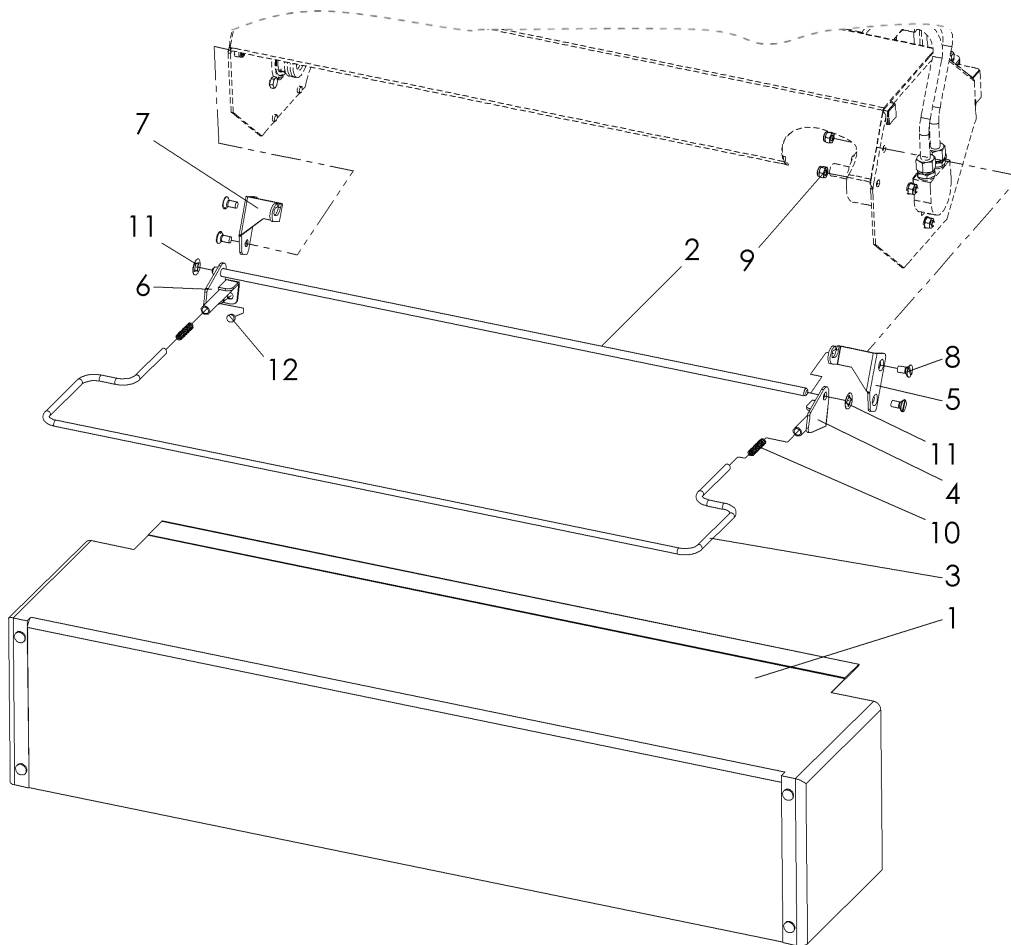
3.1.2 Dirt collection - SSB 082 K - C01790 R00

| No. | Art.-No. | Num. | Designation |
|-----|-------------|------|--------------------------------------|
| 1 | 082 101 625 | 1 | Dirt collection |
| 2 | 712 082 115 | 1 | Sealing rail |
| 3 | 712 000 118 | 1 | Container closure lever |
| 4 | 712 082 116 | 1 | Locking bar |
| 5 | 075 101 626 | 1 | Retaining rail |
| 6 | 712 082 111 | 1 | Rubber strip |
| 7 | 712 000 122 | 1 | Guide rail right |
| 8 | 712 000 121 | 1 | Guide rail left |
| 9 | 712 000 120 | 2 | closure Klotz |
| 10 | 712 000 117 | 2 | Container closure pipe |
| 11 | 912 900 101 | 1 | Lever holder |
| 12 | 712 075 093 | 1 | Lever holder counterpart |
| 13 | 941 220 008 | 1 | Kugelk pot |
| 14 | 941 310 005 | 2 | Handle |
| 15 | 941 410 031 | 2 | Stern griff |
| 16 | 926 301 076 | 2 | Wheel |
| 17 | 902 306 005 | 3 | Grub screw |
| 18 | 700 000 151 | 2 | Sticker height scale |
| 19 | 903 603 016 | 2 | Flat head screw with slot |
| 20 | 900 003 002 | 2 | Stop mother |
| 21 | 903 606 020 | 6 | Flat head screw with slot |
| 22 | 901 006 025 | 4 | Skt.-screw without shank |
| 23 | 905 206 018 | 4 | K-disc |
| 24 | 900 006 002 | 10 | Stop mother |
| 25 | 901 208 016 | 4 | Countersunk screw with inner socket. |
| 26 | 905 108 000 | 8 | Washer |
| 27 | 900 008 002 | 6 | Stop mother |
| 28 | 903 608 020 | 2 | Flat head screw with slot |
| 29 | 901 008 016 | 8 | Skt.-screw without shank |
| 30 | 905 008 000 | 8 | spring washer |
| 31 | 900 008 001 | 8 | Hexagon nut |
| 32 | 901 112 130 | 2 | Skt. Screw with shank |
| 33 | 900 012 002 | 2 | Stop mother |

3.1.3 Dirt collection - SSB 090 K - C01789 R00

| No. | Art.-No. | Num. | Designation |
|-----|-------------|------|--------------------------------------|
| 1 | 090 101 625 | 1 | Dirt collection |
| 2 | 712 090 115 | 1 | Sealing rail |
| 3 | 712 000 118 | 1 | Container closure lever |
| 4 | 712 090 116 | 1 | Locking bar |
| 5 | 090 101 626 | 1 | Retaining rail |
| 6 | 712 090 111 | 1 | Rubber strip |
| 7 | 712 000 122 | 1 | Guide rail right |
| 8 | 712 000 121 | 1 | Guide rail left |
| 9 | 712 000 120 | 2 | Closure Klotz |
| 10 | 712 000 117 | 2 | Container closure pipe |
| 11 | 912 900 101 | 1 | Lever holder |
| 12 | 712 075 093 | 1 | Lever holder counterpart |
| 13 | 941 220 008 | 1 | Kugelk pot |
| 14 | 941 310 005 | 2 | handle |
| 15 | 941 410 031 | 2 | Stern griff |
| 16 | 926 301 076 | 2 | Wheel |
| 17 | 902 306 005 | 3 | Grub screw |
| 18 | 700 000 151 | 2 | Sticker height scale |
| 19 | 903 603 016 | 2 | Flat head screw with slot |
| 20 | 900 003 002 | 2 | Stop mother |
| 21 | 903 606 020 | 6 | Flat head screw with slot |
| 22 | 901 006 025 | 4 | Skt.-screw without shank |
| 23 | 905 206 018 | 4 | K-disc |
| 24 | 900 006 002 | 10 | Stop mother |
| 25 | 901 208 016 | 4 | Countersunk screw with inner socket. |
| 26 | 905 108 000 | 8 | Washer |
| 27 | 900 008 002 | 6 | Stop mother |
| 28 | 903 608 020 | 2 | Flat head screw with slot |
| 29 | 901 008 016 | 8 | Skt.-screw without shank |
| 30 | 905 008 000 | 8 | spring washer |
| 31 | 900 008 001 | 8 | Hexagon nut |
| 32 | 901 112 130 | 2 | Skt. Screw with shank |
| 33 | 900 012 002 | 2 | Stop mother |

3.2 Rubber splash flap - GUSPL 075; GUSPL 082; GUSPL 090



3.2.1 Rubber splash flap - GUSPL 075 – C01792 R00

| No. | Art.-No. | Num. | Designation |
|-----|-------------|------|--------------------------|
| 1 | 712 075 094 | 1 | Mud flaps |
| 2 | 712 075 216 | 1 | Upright |
| 3 | 712 075 095 | 1 | Carrying handle |
| 4 | 712 000 129 | 1 | Spray flap holder, left |
| 5 | 712 000 097 | 1 | Holding plate, left |
| 6 | 712 000 128 | 1 | Spray flap holder, right |
| 7 | 712 000 096 | 1 | Retaining plate, right |
| 8 | 901 208 016 | 4 | Countersunk |
| 9 | 900 008 002 | 4 | Stop mother |
| 10 | 909 100 207 | 2 | Compression spring |
| 11 | 906 510 000 | 2 | Lock washer |
| 12 | 943 700 910 | 2 | Plug-in buffer, black |

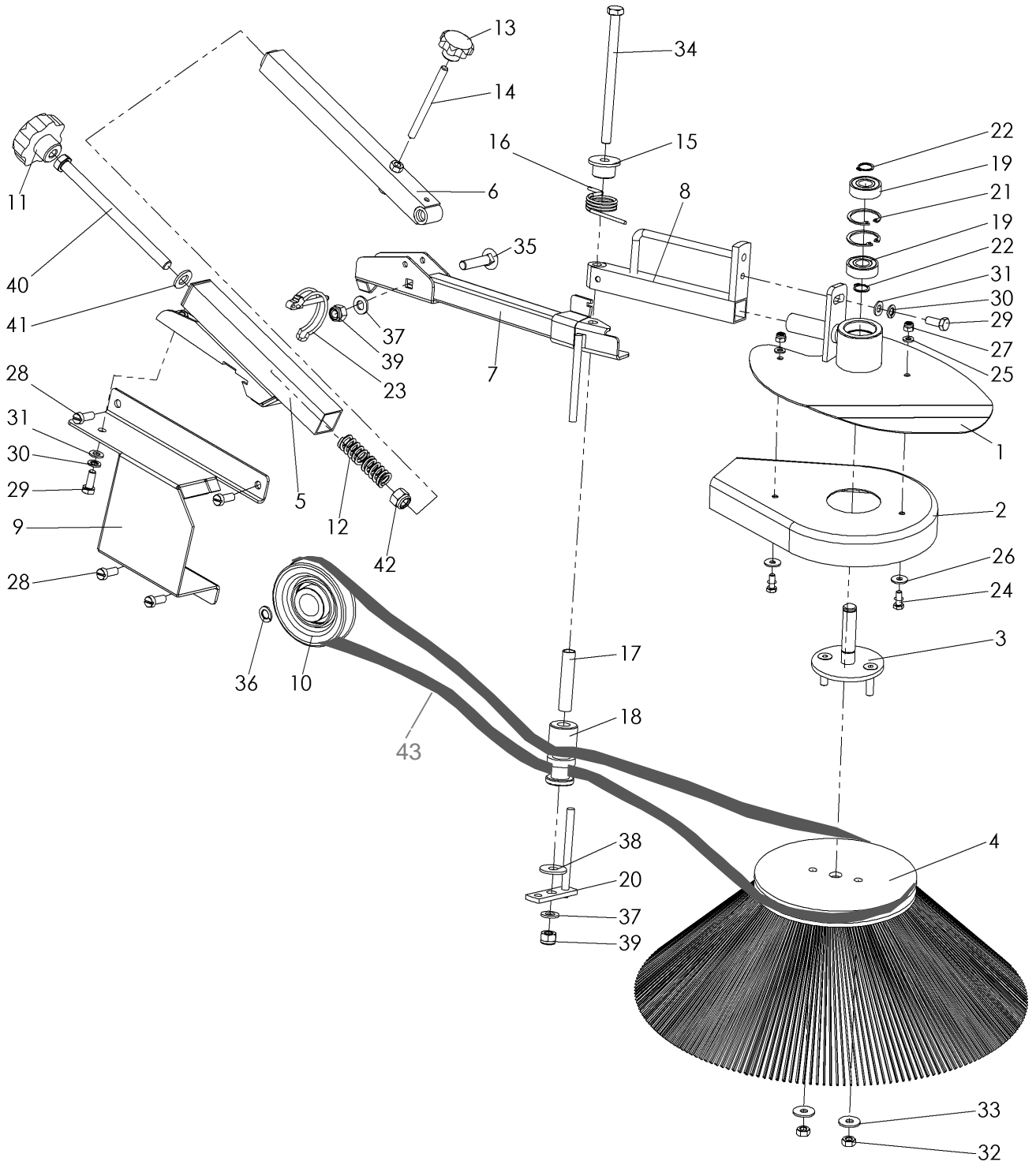
3.2.2 Rubber splash flap - GUSPL 082 – C01793 R00

| No. | Art.-No. | Num. | Designation |
|-----|-------------|------|--------------------------|
| 1 | 712 082 094 | 1 | Mud flaps |
| 2 | 712 082 216 | 1 | Upright |
| 3 | 712 082 095 | 1 | Carrying handle |
| 4 | 712 000 129 | 1 | Spray flap holder, left |
| 5 | 712 000 097 | 1 | Holding plate, left |
| 6 | 712 000 128 | 1 | Spray flap holder, right |
| 7 | 712 000 096 | 1 | Retaining plate, right |
| 8 | 901 208 016 | 4 | Countersunk |
| 9 | 900 008 002 | 4 | Stop mother |
| 10 | 909 100 207 | 2 | Compression spring |
| 11 | 906 510 000 | 2 | Lock washer |
| 12 | 943 700 910 | 2 | Plug-in buffer, black |

3.2.3 Rubber splash flap - GUSPL 090 – C01794 R00

| No. | Art.-No. | Num. | Designation |
|-----|-------------|------|--------------------------|
| 1 | 712 090 094 | 1 | Mud flaps |
| 2 | 712 090 216 | 1 | Upright |
| 3 | 712 090 095 | 1 | Carrying handle |
| 4 | 712 000 129 | 1 | Spray flap holder, left |
| 5 | 712 000 097 | 1 | Holding plate, left |
| 6 | 712 000 128 | 1 | Spray flap holder, right |
| 7 | 712 000 096 | 1 | Retaining plate, right |
| 8 | 901 208 016 | 4 | Countersunk |
| 9 | 900 008 002 | 4 | Stop mother |
| 10 | 909 100 207 | 2 | Compression spring |
| 11 | 906 510 000 | 2 | Lock washer |
| 12 | 943 700 910 | 2 | Plug-in buffer, black |

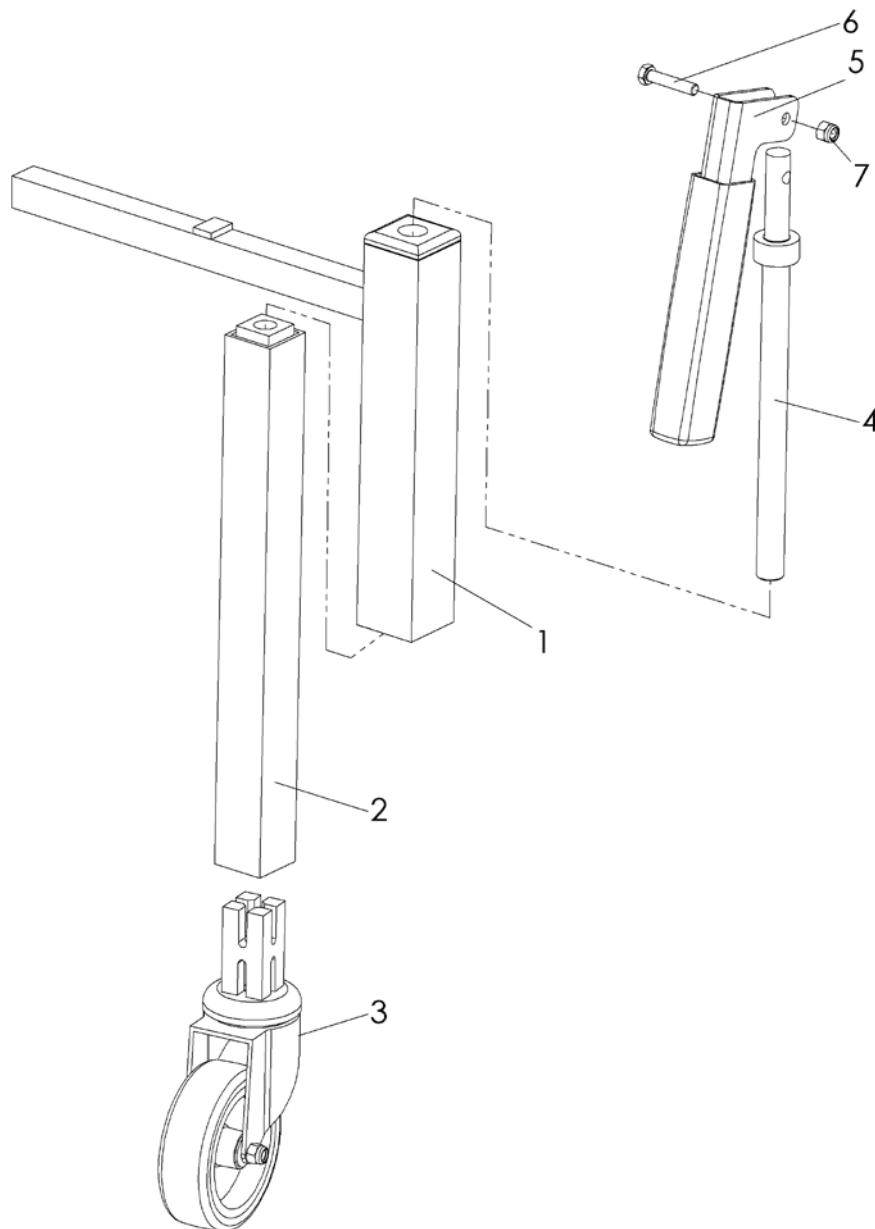
3.3 Mounted side brush - ASM 4032 / ASM 4037 - C00900 R00



Mounted side brush - ASM 4032 / ASM 4037 - C00900 R00

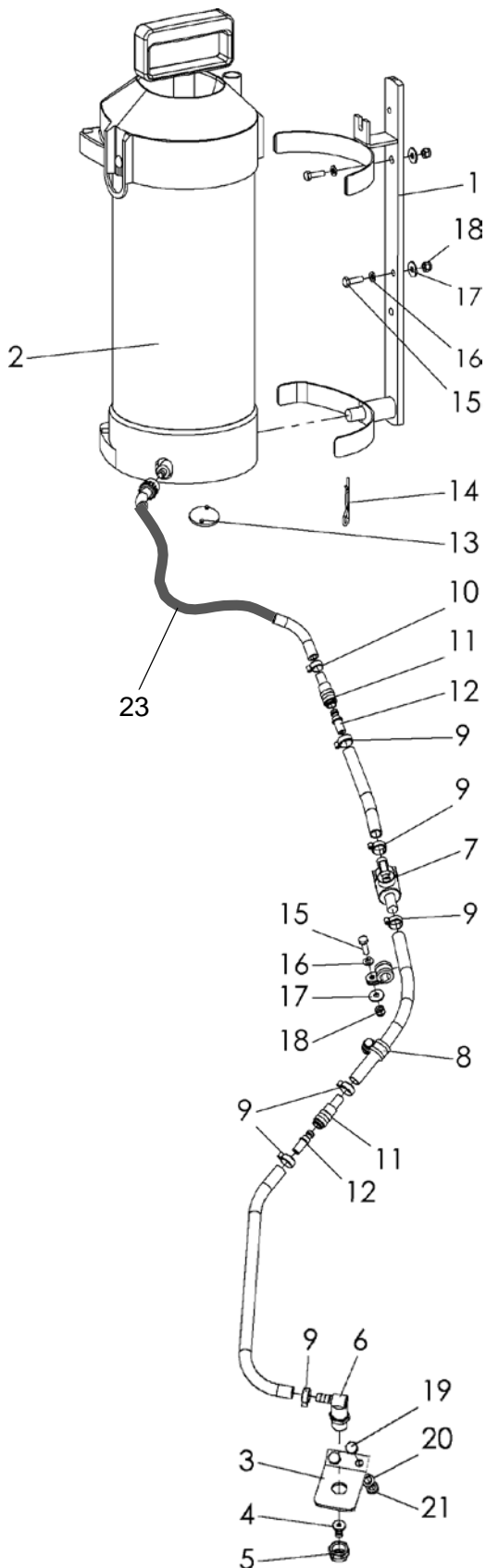
| No. | Art.-No. | Num. | Designation |
|-----|-------------|------|--|
| 1 | 105 000 129 | 1 | Pickup and collision protection side brush |
| 2 | 105 000 130 | 1 | Side brush guard |
| 3 | 105 000 020 | 1 | Broom plate |
| 4 | 105 000 025 | 1 | Flat whisk |
| 5 | 105 000 122 | 1 | Side brush arm part 1 |
| 6 | 105 000 123 | 1 | Side brush arm part 2 |
| 7 | 105 000 125 | 1 | Side brush arm part 3 |
| 8 | 105 000 126 | 1 | Side brush arm part 4 |
| 9 | 105 000 121 | 1 | Side brush holder |
| 10 | 105 000 120 | 1 | Pulley |
| 11 | 941 410 031 | 1 | Sterngriff |
| 12 | 909 103 288 | 2 | Compression spring |
| 13 | 941 210 008 | 1 | Sterngriff |
| 14 | 105 000 124 | 1 | Threaded rod |
| 15 | 105 000 127 | 1 | Centering |
| 16 | 909 300 462 | 1 | Torsion spring |
| 17 | 705 141 168 | 1 | Pipe |
| 18 | 105 000 128 | 1 | V-belt idler |
| 19 | 924 306 202 | 2 | Ball-bearing |
| 20 | 105 000 131 | 1 | Belt guide |
| 21 | 906 000 350 | 2 | Circlip inside |
| 22 | 905 915 000 | 2 | Circlip outside |
| 23 | 907 155 000 | 1 | Pipe linch pin |
| 24 | 901 006 016 | 2 | Skt.-screw without shank |
| 25 | 905 106 000 | 2 | Washer |
| 26 | 905 206 018 | 2 | K-disc |
| 27 | 900 006 002 | 2 | Stop mother |
| 28 | 903 608 020 | 4 | Flat head screw with slot |
| 29 | 901 008 020 | 2 | Skt.-screw without shank |
| 30 | 905 008 000 | 2 | Spring washer |
| 31 | 905 108 000 | 2 | Washer |
| 32 | 900 008 001 | 3 | Hexagon nut |
| 33 | 905 208 025 | 2 | K-disc |
| 34 | 901 110 150 | 1 | Skt. Screw with shank |
| 35 | 901 910 045 | 1 | Carriage bolt |
| 36 | 905 010 000 | 1 | Spring washer |
| 37 | 905 110 000 | 2 | Washer |
| 38 | 905 210 000 | 1 | K-disc |
| 39 | 900 010 002 | 2 | Stop mother |
| 40 | 901 112 180 | 1 | Skt. Screw with shank |
| 41 | 905 112 000 | 1 | Washer |
| 42 | 900 012 002 | 1 | Stop mother |
| 43 | 921 110 185 | 1 | fan belt |

3.4 Jack stand AST 32 LR - C01796 R00



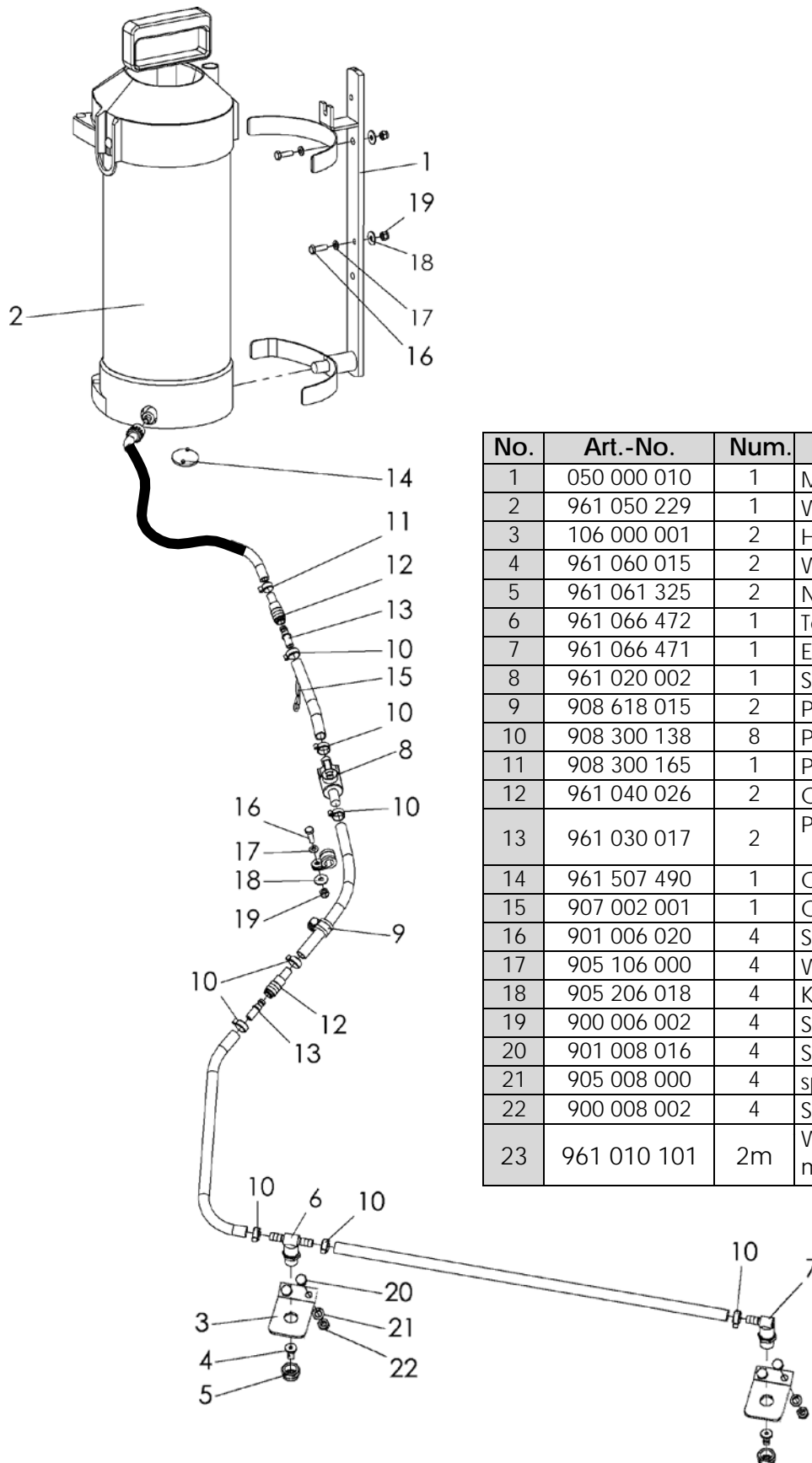
| No. | Art.-No. | Num. | Designation |
|-----|-------------|------|-----------------------------|
| 1 | 090 001 441 | 1 | Parking support |
| 2 | 135 000 443 | 1 | Support inner tube |
| 3 | 926 301 075 | 1 | Support wheel with expander |
| 4 | 100 000 490 | 1 | Spindle |
| 5 | 700 000 085 | 1 | Hand lever |
| 6 | 901 005 025 | 1 | Skt.-screw without shank |
| 7 | 900 005 002 | 1 | Stop mother |

3.5 Water sprinkler 5 lt. WAS 51 K 1500 - C01818 R00
FKM 750/FKM820







| No. | Art.-No. | Num. | Designation |
|-----|-------------|------|---|
| 1 | 050 000 010 | 1 | Mounting frame water barrel 5l |
| 2 | 961 050 229 | 1 | Water barrel 5 lt. Compl. |
| 3 | 106 000 001 | 1 | Holding plate water nozzle |
| 4 | 961 060 015 | 1 | water nozzle |
| 5 | 961 061 325 | 1 | Nut |
| 6 | 961 066 472 | 1 | elbow |
| 7 | 961 020 002 | 1 | stopcock |
| 8 | 908 618 015 | 2 | pipe clamp |
| 9 | 908 300 138 | 6 | pipe clamp |
| 10 | 908 300 165 | 1 | pipe clamp |
| 11 | 961 040 026 | 2 | Coupling for hose |
| 12 | 961 030 017 | 2 | Plug for water sprinkler |
| 13 | 961 507 490 | 1 | cup seal |
| 14 | 907 002 001 | 1 | cotter pin |
| 15 | 901 006 020 | 4 | Skt.-screw without shank |
| 16 | 905 106 000 | 4 | Washer |
| 17 | 905 206 018 | 4 | K-disc |
| 18 | 900 006 002 | 4 | Stop mother |
| 19 | 901 008 016 | 2 | Skt.-screw without shank |
| 20 | 905 008 000 | 2 | spring washer |
| 21 | 900 008 002 | 2 | Stop mother |
| 23 | 961 010 101 | 2m | Water hose - only available in meter lengths! |

3.6 Water blaster 5 lt. - WAS 52 KM - C01795 R00
FKM 900



| No. | Art.-No. | Num. | Designation |
|-----|-------------|------|---|
| 1 | 050 000 010 | 1 | Mounting frame water barrel 5l |
| 2 | 961 050 229 | 1 | Water barrel 5 lt. Compl. |
| 3 | 106 000 001 | 2 | Holding plate water nozzle |
| 4 | 961 060 015 | 2 | Water nozzle |
| 5 | 961 061 325 | 2 | Nut |
| 6 | 961 066 472 | 1 | Tee |
| 7 | 961 066 471 | 1 | Elbow |
| 8 | 961 020 002 | 1 | Stopcock |
| 9 | 908 618 015 | 2 | Pipe clamp |
| 10 | 908 300 138 | 8 | Pipe clamp |
| 11 | 908 300 165 | 1 | Pipe clamp |
| 12 | 961 040 026 | 2 | Coupling for hose |
| 13 | 961 030 017 | 2 | Plug for water sprinkler |
| 14 | 961 507 490 | 1 | Cup seal |
| 15 | 907 002 001 | 1 | Cotter pin |
| 16 | 901 006 020 | 4 | Skt.-screw without shank |
| 17 | 905 106 000 | 4 | Washer |
| 18 | 905 206 018 | 4 | K-disc |
| 19 | 900 006 002 | 4 | Stop mother |
| 20 | 901 008 016 | 4 | Skt.-screw without shank |
| 21 | 905 008 000 | 4 | spring washer |
| 22 | 900 008 002 | 4 | Stop mother |
| 23 | 961 010 101 | 2m | Water hose - only available in meter lengths! |

3.7 Sweeping rollers: diameter 32cm

| Image | Designation | Order-No. |
|---|---|--|
|  | <p>Dirt broom With poly full trimming</p> <p>for EFKM 07532 H-K 35; H-KU 70 for EFKM 08232 H-K 35; H-KU 70 for EFKM 09032 H-K 35; H-KU 70</p> | <p>075 016 032 082 016 032 090 016 032</p> |
|  | <p>Dirt roll mixes With poly/corrugated wire trimming (50% each)</p> <p>for EFKM 07532 H-K 35; H-KU 70 for EFKM 08232 H-K 35; H-KU 70 for EFKM 09032 H-K 35; H-KU 70</p> | <p>075 016 032 082 016 032 090 016 032</p> |
|  | <p>Combination broom With 5-row poly twist trim</p> <p>for EFKM 07532 H-K 35; H-KU 70 for EFKM 08232 H-K 35; H-KU 70 for EFKM 09032 H-K 35; H-KU 70</p> | <p>075 010 032 082 010 032 090 010 032</p> |
|  | <p>Snow broom With 4-row poly-twist trim</p> <p>for EFKM 07532 H-K 35; H-KU 70 for EFKM 08232 H-K 35; H-KU 70 for EFKM 09032 H-K 35; H-KU 70</p> | <p>075 008 032 082 008 032 090 008 032</p> |

Kersten

SITE MAINTENANCE EQUIPMENT

Distributed in UK by
Kersten (UK) Ltd Tel. 0118 986 9253

Progress House
39 Boulton Road Reading, RG2 0NH
www.kerstenuk.com - info@kerstenuk.com